

YEAR  
**10**



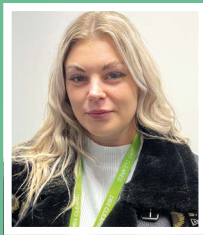
# GREENSHAW NEWS

DECEMBER 2025

## Year 10 make a successful start on their GCSE journey



Mr A Heffernan  
Head of Year 10



Miss C Merrett  
Deputy Head of Year 10

### Success so far: mock assessments

I am incredibly proud of the commitment that Year 10 students have shown across all their subjects. This was clearly reflected in the recent round of mock assessments, where we saw some truly excellent feedback. The results demonstrate that the students are building a strong foundation in their chosen subjects, and their hard work is paying off. This is a brilliant start, and they should all feel very encouraged.

We understand that for some students, the mock results may not have been what they were hoping for. Please view these assessments not as final grades, but as a valuable diagnostic tool – a roadmap highlighting areas where more focus is needed. Crucially, the new year is the perfect time for a fresh start and a renewed commitment to put things right. We encourage any student who feels disappointed to approach the spring term with determination, using the feedback constructively to identify and target specific areas for

improvement. Our subject teachers and Year 10 team are ready to support them in creating a focused plan for success in 2026.

### The importance of foundation: attendance and homework

As we enter the crucial GCSE years, the importance of two key areas cannot be overstated:

- **Attendance:** High attendance is directly linked to academic success. Every day in school counts, ensuring students don't miss vital content and explanations. Please continue to prioritise excellent attendance, as it is the bedrock of their learning.
- **Homework:** Setting aside dedicated time for homework reinforces classroom learning and develops the independent study skills they will rely on heavily next year. Regular completion of high-quality homework is essential for consolidating knowledge and achieving their potential.

### Looking ahead to the new year: enrichment and engagement

The new year promises more exciting opportunities as we continue to shape well-rounded, ambitious young adults.

Continued on next page ►

First day of spring term is  
Monday 5th January 2026



## Year 10 highlights

► Continued from previous page

We are particularly looking forward to:

- **Work experience:** This invaluable opportunity allows students to gain real-world insight into different careers and develop essential employability skills.
- **Enrichment days:** These days are designed to broaden their horizons, focusing on everything from wellbeing and study skills to career planning.
- **Clubs and extra-curricular activities:** To further support their development and wellbeing, we will be encouraging all students to sign up for new clubs and activities on the Frog platform when we return in January. Taking part in clubs helps students develop leadership skills, find new passions, and manage their well-being, which is essential for balancing the demands of GCSE study.

### Looking forward

I hope you and your family have a restful and joyous Christmas break. I strongly encourage every one of you to use this well-deserved holiday period to recharge your batteries, and enjoy precious quality time with your family and friends. Let this be a time of fun, relaxation, and reflection on all the new skills and knowledge you've successfully gained since September. When you return in January, I look forward to seeing you all feeling refreshed, energised, and ready to enthusiastically build upon the excellent foundation you have established this term.

Please remember that we will resume straight away with Week 1 on your timetable. Wishing a very restful and joyful Christmas to all those who celebrate it. Thank you for your continued support.

**Mr A Heffernan, Head of Year 10, and Miss C Merrett, Deputy Head of Year 10**

## Year 10 geographers explore regeneration in Stratford

This week, our Year 10 geographers successfully completed their Stratford Olympic Regeneration fieldwork, bringing classroom learning to life through hands-on geographical enquiry.

Students investigated the long-term impacts of the London 2012 Olympic regeneration by engaging directly with the local environment and community. They carried out environmental quality surveys across the area and confidently interviewed local residents to find out how regeneration has affected their lives, livelihoods, and sense of place. These real-world methods are a key part of understanding how urban change can bring both opportunities and challenges.

We were also proud to see our Year 13 geographers supporting the day as part of their Sixth Form enrichment programme. They acted as fieldwork mentors, helping to guide data collection, support younger students, and model excellent geographical practice.

The trip was an excellent example of collaboration across year groups and a fantastic opportunity for our students to develop their confidence, communication skills, and geographical enquiry techniques outside the classroom. Well done to all involved!

**Mr Barnes, Geography Teacher**





## A celebration of talent

Our Christmas performing arts showcase was an unforgettable celebration of talent, creativity and collaboration. This year's event brought together over 130 students from Years 7 to 11, who took to the stage with an inspiring blend of drama, dance, music and spoken English performances.

Performing to a full audience of more than 200 family members, friends and staff, our students demonstrated not only their skills, but also their passion, confidence and dedication.

From a fun, festive drama 'Mission Chrimpossible' and expressive and slick dance performances, to captivating

musical pieces and thoughtful poetry, each performance reflected the hard work poured into rehearsals over the past term. The energy backstage and the enthusiasm on stage made the evening truly special. A huge thank you goes to our supportive audience for cheering on our young performers, as well as helping us to raise over £200 for the Daniel Spargo Mabbs Foundation.

We are incredibly proud of every student who took part. Their teamwork and creativity continue to inspire us and we look forward to seeing even more remarkable performances in the future.

**Ms C Izzard, Head of Dance**





## A visit to Scrooge at Sadler's Wells

Our dance students enjoyed an inspiring trip to Sadler's Wells East to see ZooNation's 'Scrooge' – a vibrant, hip-hop retelling of the classic Dickens tale.

From the moment the curtain rose, students were captivated by ZooNation's signature blend of high-energy choreography, dynamic storytelling and powerful music. The production tackled the familiar themes of generosity, empathy, and transformation in a way that connected strongly with our students, many of whom commented on how refreshing it was to see a festive story told

through street dance and contemporary styles.

The trip provided not only a memorable theatre experience but also valuable insight into professional performance practice. Students returned buzzing with ideas and inspired to bring new movement and creativity into their own work.

A huge thank you to the staff who supported the visit and to our students for representing the school brilliantly.

**Ms C Izzard, Head of Dance**

## An unforgettable World of Work day

A group of Year 10 and 11 students with the King's Trust experienced an unforgettable World of Work Day at Amazon, supporting their Personal Development qualification.

The visit offered an opportunity to step inside Amazon's UK headquarters and gain first-hand insight into one of the world's leading technology and innovation companies.

The day began with a guided tour of the headquarters, where students learned about Amazon's dynamic workplace culture and the core principles that drive the company's success. From customer obsession to a commitment to innovation, the group gained a clearer understanding of what it means to work for a global brand at the forefront of digital transformation.

Students then took part in a series of engaging workshops covering a wide range of sectors within Amazon's ever-expanding business. From exploring the creative world of Amazon Music, the role of artificial intelligence, to

understanding how products are marketed and sold. Each session offered the opportunity for lots of student questions and activities that encouraged students to be curious and broaden their career aspirations.

Izzy, a Year 10 student, said she had a great day and would go again! She said that she learned things that she never would have thought about, for example, always say yes to challenges and opportunities even though it may be easier to say no to them.

**Ms S Webb, Assistant Headteacher**





## 12 Days of Christmas: embracing the challenge!

As we reach the end of our first term, we are incredibly proud to share that our whole-school attendance currently stands at 94%. This is a fantastic achievement and reflects the committed attitude our students show every single day towards their learning, their routines, and their place in our school community. We are also delighted to share that Greenshaw has received the National School Attendance Award for the 2024/25 academic year (pictured below), recognising that we are in the top 25% of similar secondary schools in England, as awarded by FFT. While this is a significant accomplishment, we know there is always room for improvement, and our goal as we move into the spring and summer terms is for our attendance to continue to rise even further.



It has been especially encouraging to see the positive impact of our Race to 20 initiative. Students who took part worked hard to attend school every day for 20 consecutive days, and many achieved this impressive milestone. These students not only improved their overall attendance

but demonstrated real resilience and determination. To celebrate their success, they were invited to a special breakfast in school, and the students enjoyed their well-deserved reward.

We hope students have also enjoyed our festive '12 Days of Christmas' attendance rewards. Each day, one student from every tutor group who is present has the chance to win a prize from our Christmas 'spin the wheel', with rewards ranging from novelty socks and chocolates to Christmas hats, pens, and face masks (see two of our winners above). In the final three days of term, we're adding even more excitement with super spins for each year group, giving students who have been in school for the full 12 days an extra chance to win something special.

### Attendance matters – supporting families

We understand that it can sometimes be difficult to decide whether your child is well enough to attend school. At Greenshaw, we want to reassure families that our first aid room is staffed by trained first aiders, and if your child becomes too unwell during the day, we will contact you.

### Why excellent attendance is important

Every school day counts. Regular attendance helps students to:

- Keep up with learning and avoid gaps in knowledge
- Build friendships and confidence
- Achieve stronger outcomes, every missed day can make a difference.

Research consistently shows that poor attendance can affect academic progress, social development, and even future opportunities. By attending every day, students give themselves the best possible chance of success.



## School Council – a meaningful platform for student voice

At Greenshaw, our school council provides a meaningful platform for student voice – empowering students to express their views, contribute to school decisions, and take an active role in shaping a positive school environment. This sense of ownership and involvement is a key part of our school culture.

It's been fabulous to see the continued growth of our varied school council involvement this academic year from year team councils, whole school council, Greenshaw Learning Trust (GLT) and Sutton borough council.

The year team council have been heavily involved in supporting staff with student voice. They have been visited by our Assistant Headteachers, Mrs Carter and Mrs Weale, to discuss rewards, Deputy Headteacher, Mrs Wallace, to discuss safeguarding and Miss Kirby to discuss wellbeing. Students' thoughts and opinions have been insightful to support change here at Greenshaw.

The whole school council has been busy supporting the launch of this year's enrichment days. Students recently had the opportunity to meet with Mrs Langford to discuss attendance strategies and Mrs McCormick to discuss whole school social action initiatives.

The GLT school council has met once this academic year and they discussed shared experiences and ideas on important subjects, including improving attendance, extra-curricular activities, future pathways (A Levels, apprenticeships and careers) and a sense of belonging. Two of our Year 10 students, Liyah and Josephine, did a fantastic job representing Greenshaw High School (pictured). They joined students from other GLT schools to talk about what is going well and what could be even better across the trust.

The focus of the meeting was on the main priorities for 2025–26, and the students worked in small break out rooms to share ideas, chat about their own experiences, and give honest feedback.



Student input directly influences Greenshaw Learning Trust priorities and helps shape the vision for our 'family' of schools, ensuring student voices are heard by leadership and trustees.

The Sutton borough school council met on 7 November 2025, hosted by Wilson's School. Students discussed smartphone use in schools, favouring responsible use over bans, and received updates on knife crime initiatives, police safety measures, CCTV use, and youth vaping, with calls for better education, enforcement and awareness. They also heard about Sutton's new Youth Framework designed to amplify youth voices. The meeting ended with Councillor Barry Lewis praising all students for their thoughtful and insightful contributions.

All minutes from each school council page are recorded on Frog if you would like to take a look. If you have any suggestions for discussion with the year school council, please tap on the suggestion button and add the suggestion.

**Ms S Webb, Assistant Headteacher**

## Support while school is closed

At Greenshaw, we work closely with a variety of agencies including the London Borough of Sutton, volunteer groups and the NHS. Please be aware that our website has many signposts to support agencies in the section '**Care & Support**' as needed.

Our Help for the Holiday booklet can also be found on our website [here](#) and provides lots of useful information including the HAF programme offering children on benefits-related free school meals access to exciting activities, enriching experiences and nutritious meals – at no cost.



## Assemblies at Greenshaw

This academic year, our assemblies have continued to foster students' cultural awareness. Due to the restrictions of the temporary site, assemblies have been delivered online and have included a range of thoughtful and reflective activities. Below is a brief summary of each assembly.

### East and South East Asian Heritage Month

For our first East and South East Asian Heritage month assembly, led by our Equality Diversity and Inclusion team, we examined the impact the ESEA community has had on Britain and how we can celebrate these achievements. Students had an opportunity to discuss why it is important we have heritage months for under-represented groups within our society.

### International Day of Peace

This year's assembly, led by the RS department, focused on the 2025 theme of acting now for a peaceful world. In a time of turbulence, tumult, and uncertainty, it is critical for everyone to take concrete action to mobilise for peace. The assembly asked students to speak up against violence, hate, discrimination, and inequality; practice respect; and embrace the diversity of our world.

### Black History Month

This year's theme is 'standing in power and pride' and our assembly from our equality diversity and inclusion team highlighted the profound contributions made by Black British people – be they leaders, activists or pioneers who have shaped history. Students then discussed why it is important to remember these figures and what we can learn from them.

### Armistice Day

The assembly reflected on the sacrifices made by soldiers in past wars and the impact of conflict on communities and families. It provided a space to encourage respect, gratitude, and thoughtful reflection.



### Anti-bullying Week

Anti-Bullying Week 2025 took place from Monday 10th to Friday 14th November, centred around this year's theme: power for good. Our assembly, from the PSHE department, explored how every young person can use their voice and actions to make a positive difference, whether they witness bullying in person or online. Students were encouraged to speak up safely and confidently when they see unkind behaviour and reminded that seeking help is a sign of strength. It's vital not to ignore bullying or assume that someone else will report it. We reinforced the message that they each have the power to help stop bullying by telling a trusted adult, speaking to a teacher, or using our school's reporting system on Frog.

### International Men's Day

This assembly looked at the origins of International Men's Day and celebrated the achievements of positive male role models. Students were reminded that regardless of their gender it is important that they look after their mental health and well-being.

### UK Parliament Week

During parliament week, we discussed the legislative role of parliament, focusing on who makes policy, and how laws get passed. Students then engaged in debate regarding which laws they would like to see introduced into parliament in the next session.

### UK Disability Month

This assembly supported last year's, by re-examining different forms of disability and students had a chance to describe their own experiences. We also looked at the social model of disability, which suggests that disabled people are not disabled due to their impairments but because of the barriers they face in society.

We ended the assembly by looking at what we can all do to break down these barriers



## Extra-curricular clubs – keeping students inspired and connected

At Greenshaw High School, we are committed to providing our students with enriching opportunities that extend beyond the academic curriculum. Participating in extra-curricular clubs enables students to develop new skills, enhance self-confidence, build meaningful friendships, explore interests, and cultivate leadership qualities.

Our extra-curricular clubs offer is growing and is now bigger and better than ever. We have 52 clubs running each week, supported by 45 amazing members of staff. It's been great to see students showing up regularly and really engaging in all activities.

Brand-new clubs this year are anime club and cake decorating, both have been especially popular! Mr Aoanan has said the anime club was established to give students a welcoming space to explore their favourite series, share recommendations, and engage in meaningful discussion. Students have developed a deeper appreciation for diverse art styles, cultural influences, and genre conventions, while also learning to analyse anime with a more critical eye. Above all, the club fosters community – bringing together students who enjoy connecting over shared interests and discovering new favourites together.

It's been a brilliant autumn term offer with many options for students. We can't wait to see how our clubs continue to grow throughout the year. Our clubs are available before school, during lunchtimes and after school, please look at the timetable here: <https://www.greenshaw.co.uk/learning/extra-curricular-activities/extra-curricular-activities>

Students can sign-up to clubs through their Frog account by clicking on the 'Clubs' button on the Frog home page.

**Extra-curricular clubs at Greenshaw 2025-26**

At Greenshaw High School, we are committed to providing our students with enriching opportunities that extend beyond the academic curriculum.

Participating in extra-curricular clubs enables students to develop new skills, enhance self-confidence, build meaningful friendships, explore interests, and cultivate leadership qualities.

Our clubs are available before school, during lunchtimes, and after school. Please look at the timetable and if you would like to attend a club, please sign up by clicking on the 'Clubs' button on the Frog home page.

COMMITTED TO EXCELLENCE

## Sports round up

We have kicked off this year with numerous PE fixtures and events from indoor cricket to borough cross country.

So far this year, our students have participated in 35 different fixtures in football, basketball, netball, athletics and cricket.



Here are some of the highlights:

- **Basketball:** our U15 team got through to the quarter finals after winning against Sutton Grammar 30-20.
- **Football:** our Year 11 boys won their first-ever game in a nail-biting penalty shoot out.
- **Football:** the Sixth Form team went through to the semi finals after winning 4-1 at Oaks Park.
- **Netball:** our Year 10 team kicked off a great start to the season with a 15-12 win against Cheam.





## Greenshaw Learning Trust winter concert at Charterhouse

The Greenshaw Learning Trust winter concert at Charterhouse School this week was a truly wonderful celebration of talent, teamwork and community.

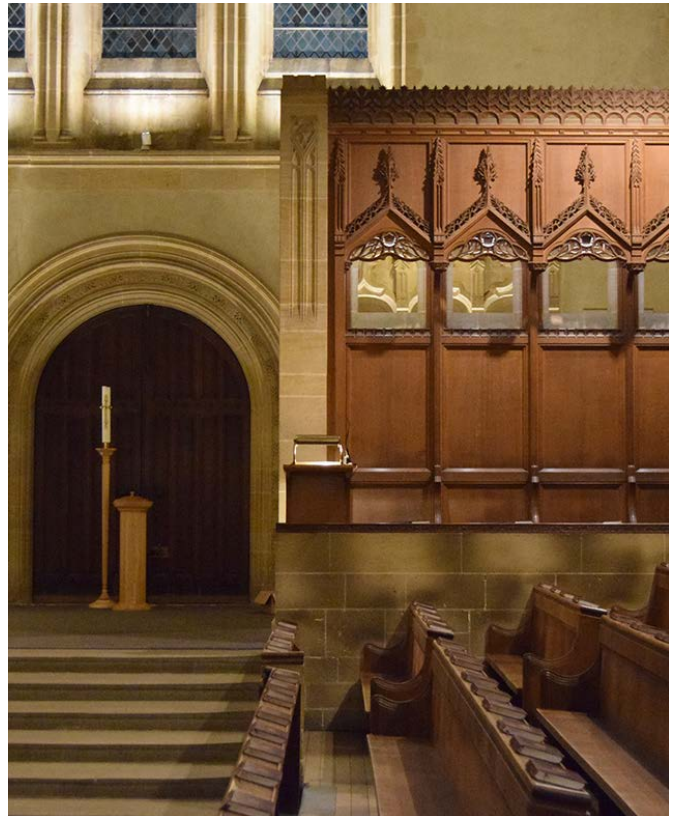
Students from across Brakenhale School, Broadwater School, Coombe Wood School, Greenshaw High School, Hartland High School, Park House School, Oakbank School, Orchard Park High School, and Wallington County Grammar School delivered an evening of fantastic music and impressively polished performances, showcasing months of dedication, rehearsals and hard work.

The standard of performance was exceptional and was a powerful reminder of the creativity, commitment and confidence of the young people in our trust.

Thank you to all the staff who prepared students so thoroughly in the lead-up to the concert and who generously gave their time on the day and into the evening to ensure everything ran smoothly. Your support made a huge difference to the students' experience and to the success of the event.

The second GLT winter concert will be held in Bristol next week.

Thank you to everyone who attended and supported our students – it was a night to be proud of.



## Greenshaw chess team wins tournament

On Monday 24th November, our school took part in the Chess in Schools and Communities Qualifier that would allow us a chance to win the English Schools Chess Championships. Ultimately, after a long hour of fun, companionship and high spirits, we won the tournament and are now in the bracket.

Our team consisted of many players who were passionate about chess and chose to give up a substantial amount of their evening in order to help us prevail. I must truly give a special thanks to Patrick, Liam (Year 10), Ian, Aiden (Year 10), Bhatiyar, Shivam and Matthew (Year 10), Puviganth and Thusan (Year 11), for accompanying me to help us win this tournament.

Even though our team would not have been half as effective without each other, I must acknowledge the fact of the excellent display of chess shown by Patrick, Puviganth and Bhatiyar. They, along with me, ranked in the top five of the tournament, and without them, we would not have won by such a large margin.

Finally, I must thank Greenshaw High School for allowing us to have the tournament. They graciously lent us the Sixth Form computer room for the evening, as well as encouraging us to always try our best. I speak on behalf of the team when I say that without this, victory would have been impossible.

**Krishang, Captain of the Greenshaw Chess Team**





## Adventures in Zambia

A group of our students and staff had an experience of a lifetime on their trip to Zambia during the summer holidays.

### Day one

The team arrived safe and sound after almost 24 hours of travelling and set up camp surrounded by giraffes, zebras and monkeys. The team bought supplies for a barbecue and then prepared to travel to their project school in Mkushi where they will work and live within the local community.

### Day 5

Nearly a week into the trip, the team arrived at Itala Foundation School and Orphanage and got stuck in to painting and plastering new classrooms. The Zambian students were in exam season and had tests in maths, English, the local language Bemba, and social studies. In between studies, they found time to play football and netball with our team, and exchange stories and games.

The group thrived in this very different setting. Even on very cold mornings, they prepared excellent cooked meals and worked as a team to keep their camp tidy.

### Day 11

The team did an amazing job on the project work at Mkushi. They plastered, painted and laid cement in a block of new classrooms and worked incredibly hard. They were commended by the skilled trades people that they worked alongside and were so efficient that they had to find more work for them to do.

Whilst taking a break from the hard physical work, many of the team got involved in running games and teaching

dances to the children at the orphanage, as well as cooking with the local women on open fires. Some of the team were able to teach lessons in the Itala Foundation School. Excellent lessons were planned and delivered in both English and science to students aged between 10 and 15 years and class sizes of around 100 students.

After a week of project work, the group were sent off with a celebration including an orchestra and poems and dancing by students from the orphanage. They arrived back at Eureka camp in Lusaka to reconnect with the zebras and giraffes that roam freely around the camp. The team then moved on to the adventure stage of the trip.

### Day 17

The team embarked on a three-day trek along the Zambezi river. Day one involved a steep descent into the gorge. Day two came as a huge physical challenge – clambering over rocks along the river, and on day three, the students took on the steep ascent back to camp. During the night, the team slept under the stars along the riverbank and cooked dinner and breakfast on an open fire. The whole team showed great resilience and determination and were rewarded with unique views of the river.

The weekend was spent on, a three-hour boat trip to see elephants, crocodiles, hippos and water buffalo. Followed by a game drive to see giraffes, impala, antelopes and lions. They then enjoyed a final celebration before making the journey home.

The students all showed tremendous respect, courage and huge amounts of personal development, whilst making friends and memories that will hopefully last a lifetime.

### Ms Frewin, Trip Leader





## Key dates – Year 10

Christmas holiday	22nd December to 2nd January	Start of summer term	13th April
Start of spring term 2026	5th January	Parents' evening	23rd April
February half term	16th to 20th February	May half term	25th May to 29th May
End of spring term	Friday 27th March (3.00pm)	End of summer term (12.30pm)	17th July
Inset day (school is closed to students)	9th March	Summer holiday	20th July to 31st August
Easter holiday	30th March to 10th April		

## Year 10 contact list

Head of Year: Mr A Heffernan – [aheffernan@greenshawhigh.co.uk](mailto:aheffernan@greenshawhigh.co.uk)

Deputy Head of Year: Ms C Merrett – [cmerrett@greenshawhigh.co.uk](mailto:cmerrett@greenshawhigh.co.uk)

10AFS: Ms A Fish – [afish@greenshawhigh.co.uk](mailto:afish@greenshawhigh.co.uk)

10AGY: Dr A Grey-Areben – [agreyareben@greenshawhigh.co.uk](mailto:agreyareben@greenshawhigh.co.uk)

10AJT: Ms A Jothirajan – [ajothirajan@greenshawhigh.co.uk](mailto:ajothirajan@greenshawhigh.co.uk)

10AVR: Ms A Vairavanathan – [avairavanathan@greenshawhigh.co.uk](mailto:avairavanathan@greenshawhigh.co.uk)

10DRD: Ms D Ridley-Hammond – [dridley-hammond@greenshawhigh.co.uk](mailto:dridley-hammond@greenshawhigh.co.uk)

10EDH: Mrs E Doherty – [edoherty@greenshawhigh.co.uk](mailto:edoherty@greenshawhigh.co.uk)

10GSN: Ms G Saunders – [gsaunders@greenshawhigh.co.uk](mailto:gsaunders@greenshawhigh.co.uk)

10ISH: Ms I Shandulovska – [ishandulovska@greenshawhigh.co.uk](mailto:ishandulovska@greenshawhigh.co.uk)

10JAN: Mr J Aoanan – [jaoanan@greenshawhigh.co.uk](mailto:jaoanan@greenshawhigh.co.uk)

10LAN: Ms L Anius – [lanius@greenshawhigh.co.uk](mailto:lanius@greenshawhigh.co.uk)

10LHL: Mr J Mawer – [jmawer@greenshawhigh.co.uk](mailto:jmawer@greenshawhigh.co.uk)

## Join us on Twitter and Facebook!



You can find us on X @greenshawhigh

Or find us on Facebook @GreenshawHigh