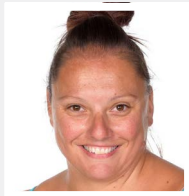




DEMONSTRATING POSITIVITY



Mr M Clarke
Head of Year 10



Ms C Elcome
Deputy Head
of Year 10

What a brilliant first term Year 10 students have had. I have been fortunate to visit lessons and it has been great to see how positively students are working: showing resilience, perseverance, engagement and focus. It is evident to see that students are taking care and pride in their work both in and outside of school. A big well done to Year 10 students, I hope that this continues when they return from the Christmas break.

Autumn term progress

The Year 10 progress reports will be released in the new year and this will provide a good opportunity for the Year 10 team to celebrate those who have displayed an outstanding attitude to learning, as recognised by all of their teachers. Students will be invited to a celebratory lunch where staff will be on hand to praise the students for their continued efforts.

When the reports are released, I would advise and encourage you to sit down as a family and, at first, discuss the areas of positivity but then to look at which areas could be improved. An activity that I would suggest doing would be to look back at the Year 9 summer report and compare this to the Year 10 report and review the areas of progress.

The standard of work produced in Year 10 has been outstanding. Students have excelled on recent trips for Alternative Provision (The King's Trust) to the Young Mariners on the River Thames (see page 2), and geography to Stratford, East London (see page 4), looking at the impact of tourism on the local areas.

Some examples of the excellent work produced by our students in food and nutrition can be found below:



Elsie (10DRL)



Daisy (10LOR)



Filipa (10SWN)



Iker (10LOR)



Kaya (10DRL)



Rakshan (10PAG)



TReinel (10 PAG)



Roxie (10ERD)



Sophgia (10 LOR)



Teagan (10TF)

Work experience

Well done to the over two hundred and eighty students that have secured their work experience placement. During our recent after school support sessions, students updated their work experience planning logs and contacted numerous employers, which resulted in many securing exciting placements. It is important for those still without a placement to use the second week of the holidays as an opportunity to continue with this work, contacting employers that will be updating their plans for 2024. We look forward to confirming school permission to placements on our return in January.

Continued on next page ►





➤ Continued from previous page

Student Council

Year 10 students have recently been through an election process to determine who will be their tutor group representative for the coming year. Well done to all those that were successful. Since their first meeting they have been canvassing opinions from their peers to see what their main priorities are for school improvement.

Teacher in charge: Mrs Elcome (Deputy Head of Year 10)

Student representatives: 10ZFR - Bryan; 10PAG - Amogh, Saitha; 10LOR - Jeremiah, Darsh and Thomas; 10HCR - Angelo; 10SWN - Raashik; 10THN - Ella; 10TF - Umme; 10DBL - Vivianna; 10DRL - Yahya; 10ERD - Fortune, Aarav and Kylah; 10TNV - Faith D.

We wish all students and their families a restful and enjoyable break.

Mr M Clarke, Head of Year 10, and Ms C Elcome, Deputy Head of Year 10



KING'S TRUST ACHIEVE PROGRAMME AT GREENSHAW

Thames Young Mariners – Surrey Outdoor Learning and Development

As part of the teamwork unit for the King's Trust Achieve Programme, our Year 10 students undertook the challenge to design, build and sail a raft at Thames Young Mariners. Not only was this a teamwork challenge, but they also had to battle with the elements.

We experienced wind, rain and sleet, however all students gave a great amount of effort to reach their goal. It was a great example of teamwork, students developed their communication, problem solving and collaboration skills to reach their end goal successfully.

A number of students had fantastic shout-outs from the leaders for being proactive or demonstrating excellent construction skills. Notable mentions included Kaya, Alfie, Poppy, Faith, Jake, Mason and Shannon. Well done to all students, who demonstrated a great example of teamwork.

Ms Webb, Assistant Headteacher

Howden World of Work – insurance company based in Aldgate, Central London

On Thursday 28th November, nine of our Achieve students were invited to the Howden head office to gain a wider understanding of the world of work.

The day started with an introduction to the company and quiz on how each student would spend money if it was given to them, which led into a talk from Gill Martin, Divisional Director of Marina Specialty at Howden.

The students learned a many new facts about how the Marine division affects their everyday life. Students also had an opportunity to take part in speed networking with different types of people from all lines of work, where they could ask them lots of questions about their careers.

The day ended with a discussion about interview skills. Our students were able to enact a role play interview session and give feedback to their interviewee.

Jo Heffernan, Youth Development lead at the King's Trust, said: "What a lovely group of young people – they should all be commended for their attitude, engagement and politeness."





GREENSHAW RECOGNISED FOR 'EXCEPTIONAL EDUCATION' IN RECENT OFSTED INSPECTION

We are delighted to share the outstanding results from our recent Ofsted inspection which celebrates the school's exceptional performance and commitment to academic excellence.

The inspection took place on 1st and 2nd October, 2024, and the school received the following judgements:

- The quality of education: Outstanding
- Behaviour and attitudes: Outstanding
- Personal development: Good
- Leadership and management: Outstanding
- Sixth Form provision: Outstanding

Inspectors made the following key points in their report:

There is an exceptional standard of education across Greenshaw High School. The school's purposeful 'Big Ideas' curriculum and academic rigour enable students to excel. Staff and students aim for excellence and they achieve it.

Leaders provide strong and effective support to staff, and are tenacious in their work to ensure students are safe and happy.

Exceptional support for students with special educational needs and/or disabilities (SEND) is present throughout the school.

A focus on personal, social, health and economic education enables students to develop into well-rounded individuals and equips them for the future. Students benefit from activities that



build confidence, leadership, and awareness of social values.

Behaviour and attitudes are exemplary throughout Greenshaw High School and students show high levels of respect for staff and their peers.

Nick House, Headteacher, said: "I am very proud of the hard work of students, staff and families. We have worked tirelessly on establishing the conditions for our young people to be successful at school, and long after they have left Greenshaw High School. I am delighted at what the Ofsted inspection team saw when they visited our school, when they described our school as both 'flourishing' and being a 'calm, safe and friendly place to be'. I am very grateful for the efforts of all involved."

Read the full report [here](#).

FASHION STUDENTS VISIT LONDON EXHIBITIONS



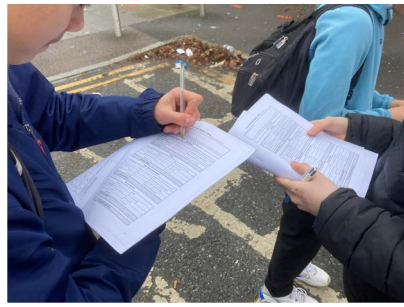
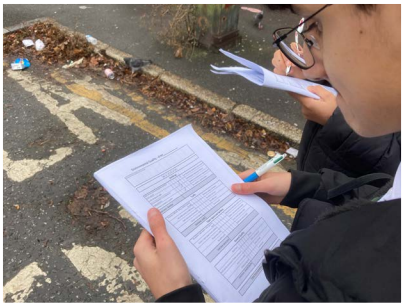
Year 12 and Year 10 fashion students enjoyed a day out at two of London's most popular exhibitions.

Their first stop was The Design Museum, which is running a retrospective of *Barbie*. The show looks at the last 65 years of the famous Mattel product, and how both cultural and technological change has been reflected in her evolution. The exhibition will provide primary research for our current Year 10 students.

In the afternoon, we headed to the Fashion and Textiles Museum, where a celebration of eighties club-life with a focus on Taboo, a club night hosted by performance artist and designer Leigh Bowery. This will, in turn, provide a rich source of inspiration for our Year 12 fashion students.

Mr B Broniecki, Head of Fashion and Textiles





INVESTIGATING URBAN ISSUES

This week, our GCSE Geography students embarked on an exciting field trip to Stratford, London, as part of their urban issues and challenges unit. They conducted questionnaires and environmental quality surveys, focusing on the contrasting areas of the Carpenters Estate and the Olympic East Village. The students worked diligently, engaging with residents to gather valuable insights into urban regeneration and quality of life.

Their impeccable behaviour and enthusiasm throughout the day made us incredibly proud, showcasing the best of our school community. This hands-on experience brought their classroom learning to life and will undoubtedly enrich their understanding of geographical concepts.

Mr A Barnes, Geography Teacher

GUYS AND DOLLS EXPERIENCE



45 students from the GCSE Dance and Drama cohorts made their way to The Bridge Theatre, London to be transported to 1930s New York City for the performance of *Guys and Dolls*, including songs such as 'Sit Down You're Rockin' the Boat' and 'Luck be a Lady'.

The immersive tickets made sure that everyone was up close to the action and completely engrossed in the story and performances of the cast. At the end of the show, the students were encouraged to dance with the cast and show off their skills, to which the students responded with great enthusiasm. Students were a credit to the school on the evening.

Students enjoyed the visit, saying:

"It was a really bright and fun performance." – Yenuli, Year 10.

"It was an inspirational evening, I really enjoyed the interactions with the cast." – Maya, Year 10.

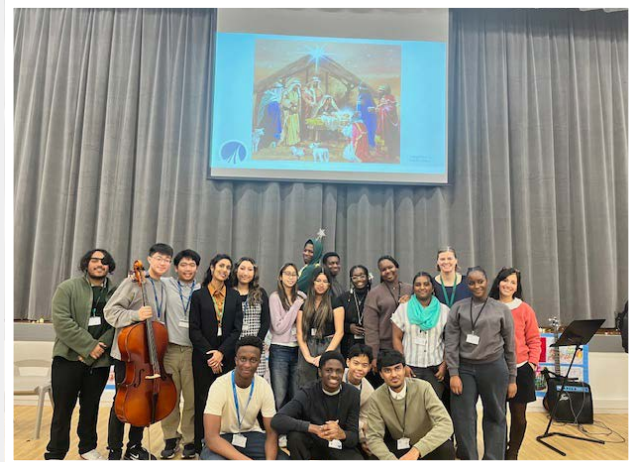
Ms C Izzard, Head of Dance

HELP FOR THE HOLIDAYS

Our safeguarding section on the school website has a great deal of useful information to support our young people and their families. All safeguarding notices and letters are also added to this section of the website. Click [here](#) to see the latest safeguarding updates that have been shared with parents.

You can also download our *Help for the Holidays* booklet from the website [here](#), for all sorts of useful advice and support for the Christmas break.





ASSEMBLIES AT GREENSHAW

Assemblies are important occasions when all members of a year group gather together. They are a space in which important announcements can be shared and we can communicate our key social, moral, spiritual and cultural concepts. These create and foster a strong and united community. This year, we have had a greater emphasis on students leading our assemblies, and we have had students from Year 7 to Year 13 presenting. This is a huge accomplishment for them, and we would like to congratulate all those students involved.

This term's assemblies are outlined below.

Reclaiming narratives

Reclaiming narratives, the theme for this year's Black History Month gave us the opportunity to shine a light on lesser known Black British heroes. This includes our own Dr George Rice, an African American physician who worked in Sutton for over 50 years in the 1800s. The initial aim of Black History Month was to make young Black people proud of their heritage however this remit has expanded and our assembly led by members of the sixth form highlighted how Black history is British history.

Anti-bullying Awareness Week

A group of our Year 9 students proudly delivered a whole school assembly for Anti-bullying Awareness Week (*pictured top left*). The theme for this year's campaign was to choose respect. Our students explained the importance of showing respect within our community, providing effective strategies for showing respect, even during disagreement, to prevent bullying behaviours.

Parliament Week

During Parliament Week, students encountered the etymology of the word representation, and explored how parliament helped to represent the people. They considered the role of the MP in their representative function, and reflected on how they could get their voice heard by them.

Disability History Month Members of 7MMB shared with the school the origins and importance of Disability History Month. They examined different forms of disability, the barriers Disabled people face and how as a community we can change our laws, environment and attitudes to ensure we can all flourish.

The Nativity story

In our final assembly of the term (*pictured top right*), we have been learning about the symbolism behind the Nativity story, which Christians celebrate at Christmas. Sixth Form students explained the deeper meaning behind familiar objects from the Nativity- the shepherd's staff, star and gifts- and how, together, they represent the Christian message of hope in Jesus Christ. We enjoyed upbeat, gospel performances, including a cello, bass guitar, and drums, before ending with the student choir singing a rousing finale full of Christmas cheer.

Ms S Webb, Assistant Headteacher





CHRISTMAS FESTIVITIES

Our Christmas fair last week was packed and buzzing with excited students, parents and staff. Everyone enjoyed the many festive stalls, activities and goodies on sale.

We would like to thank the organisers – Ms Frewin and the Zambia team, Ms Elcome and her amazing elves, Ms Navaratnam and the Tamil team, the eco warriors under Ms Carran's lead, plus many lower school volunteers and Sixth Formers.

We would also like to thank our Christian Union group, who kept us entertained with live festive music throughout the event.

The fair raised over £1700 for our two charities, the Zambia trip and Jigsaw4U.

The winners of all our competitions: Guess the gonk's name, guess the value of the coins and guess the teddy's name were all very happy with their prizes!

Ms T Reid, Sixth Form Study Skills Manager



BUILDING WORK UPDATE

The construction work on the temporary buildings is continuing on schedule. All 186 separate sections are now in place and the contractor is in the process of fitting out the interiors of all of the spaces. The external shells are situated, and power and data are being run into the classrooms as well as finishes like door frames.

It is amazing to think that from the start of work in June 2024 to the end of March 2025 two blocks of our school will be in place, complete with specialist science labs, art and design workshops, food technology rooms, computer suites and

music and drama spaces. Each of these teaching spaces will allow us to continue to deliver our full balanced curriculum while the main build progresses.

We are now at a point that heads of department have visited the temporary accommodation, and given further feedback to the contractor (such as the number of plug sockets and their locations), and the facilities are looking very impressive. There will continue to be updates over the coming months, and it is hoped that we can share photographs after the Christmas break.





BLACK HISTORY MONTH 2024



Greenshaw High School celebrated Black History Month during October with a variety of special events.

At Greenshaw High School during October, there have been a number of events that have enabled all of our students to celebrate Black History Month.

The focus for this year's Black History Month is 'Reclaiming Narratives', stories that shape the world. This offered an opportunity for everyone to learn the forgotten stories of Black Britons who have changed our society for the better.

The celebrations began with an assembly detailing the origins of Black History Month with an excellent presentation from our Sixth Formers. Highlights from our after school events have included the Black British Book club, where students looked at extracts from Andrea Levy's *Every Light in the House Burnin'* which explores the Black immigrant experience in the 1940s. Students were invited to

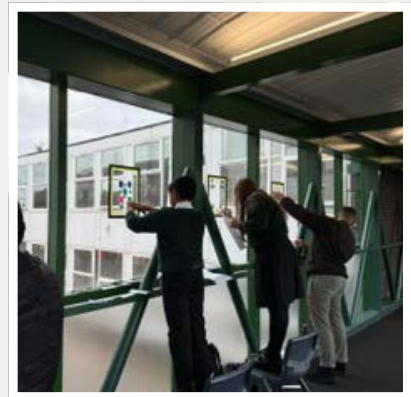
share their stories and thoughts of being second generation Britons.

There was a film screening of *Belle*, a fictionalised account of the life of Dido Elizabeth Belle, a woman of mixed heritage who was raised by her aristocratic great-uncle Lord William Murray, First Earl of Mansfield in 18th century England.

A number of KS3 clubs also ran events: history club examined sources about the impact of Black Britons during World War One, and science club wrote letters detailing the importance of diversity in this field of study.

Students at these events and others, have stated how much they have enjoyed learning more about our shared history. I would like to thank everyone who has run and supported events and the EDI team promise that next year's celebrations will be even bigger and better!

Ms M Mbema, Senior Equality and Diversity Lead





FOOD BANK COLLECTION



Our social action group organised a Harvest Foodbank collection for Sutton FoodBank on Monday and Tuesday this week, and the response from families, students and staff has been amazing

Over the two days, there were collection boxes at each gate of the school for donations of tinned foods, drinks, instant foods and toiletries.

It was an amazing effort from our school community, and we are grateful to all the parents/carers who donated so generously and all the students who volunteered to pack and load items for delivery to Sutton Foodbank. Students also assembled and wrapped six hampers for families in our community that are most in need.

Sutton Foodbank were very grateful to everyone for the donations.

REMEMBRANCE DAY ASSEMBLY

Greenshaw High School staff and students observed Remembrance Day with an assembly on Tuesday 12th November.

Students were given the chance to reflect upon all those who have lost their lives in war and consider the act of remembrance as a way of preserving our family and national identity.

Headteacher, Mr House, talked to all the students about why the Remembrance ceremony is always held at 11.00am on 11th November, when World War I finished in 1918, and about the significance of red poppies. He shared a letter written by Private Charles P Johnson to his family back home, which contained a pressed red poppy:

"Just a few lines to wish you many happy returns of the day. I am sorry I cannot send you anything along, but I have picked a flower

in the dead of night on that space between the trenches that are called No Man's Land. I hope you will treasure it. I was sniped at many a time, going out for them but with lying flat I managed to get one."

The school community then listened in silence to a poem:

For the Fallen, by Laurence Binyon (1914)

They went with songs to the battle, they were young,
Straight of limb, true of eye, steady and aglow.
They shall grow not old, as we that are left grow old:
Age shall not weary them, nor the years condemn.
At the going down of the sun and in the morning
We will remember them.

The assembly concluded with a minute's silence.

GOLD AWARDS IN SCIENCE



In November, students from Years 7 to 13 took part in the Bebras Challenge, a national competition organised by the Raspberry Pi Foundation in collaboration with the University of Oxford.

Each participant had 45 minutes to tackle a series of interactive tasks designed to enhance logical thinking and problem-solving skills tailored to their age group.

Congratulations to all students who participated. Special recognition goes to Megan and Aradhya (Year 8), as well as E Shun and Matthew (Year 9), for earning gold awards (pictured with Mr House).

Ms N Haq, Director of Science





KEY DATES – YEAR 10

End of autumn term 20th December (12.30pm)	End of spring term (13.30pm)	4th April
Start of spring term	6th January	Start of summer term
February half term	17th - 21st February	May half term
Inset day (school is closed to students)	3rd March	End of summer term
Year 10 parents' evening	3rd April	26th-30th May
		18th July (12.30pm)

YEAR 10 CONTACT LIST

Head of Year: Mr M Clarke – mclarke@greenshawhigh.co.uk
 Deputy Head of Year: Ms C Elcome – celcome@greenshawhigh.co.uk

- 10SWN: Mr S Warner – swarner@greenshawhigh.co.uk
- 10DBL: Mr D Bell – dbell@greenshawhigh.co.uk
- 10ZFR: Ms Z Fairhall – zfairhall@greenshawhigh.co.uk
- 10DRL: Mr D Rollins – drollins@greenshawhigh.co.uk
- 10ERD: Ms E Rider – erider@greenshawhigh.co.uk
- 10THN: Ms M Kerrigan – mkerrigan@greenshawhigh.co.uk
- 10HCR: Ms H Corea – hcorea@greenshawhigh.co.uk
- 10LOR: Mr L O'Rourke – lorourke@greenshawhigh.co.uk
- 10PAG: Ms P Agyemang – pagyemang@greenshawhigh.co.uk
- 10TF: Ms T Forno – tforno@greenshawhigh.co.uk
- 10TNV: Ms T Navaratnam – tnavaratnam@greenshawhigh.co.uk

JOIN US ON TWITTER AND FACEBOOK!



You can find us on X [@greenshawhigh](https://twitter.com/greenshawhigh)
 Or find us on Facebook [@GreenshawHigh](https://www.facebook.com/GreenshawHigh)

