



The Postcard PROJECT

GREENSHAW HIGH SCHOOL

2020 has had its highs and lows! We want to give everyone a space to:

reflect on the last few months, and
reconnect as a school community



HOW?



We have given every student and member of staff a blank postcard.
Here's what to do with it...



1. Think about your experiences of and feelings about the pandemic.
2. Visually illustrate this in your own creative way. It could be a drawing, painting or collage. It could even be one word or phrase, beautifully designed.
3. Post your finished postcard into your year group postbox. Make sure it has your name and tutor group on the back.
4. Standout entries will be used as part of a whole school mural. If you'd rather your entry wasn't included, just let us know on the back of your postcard.
5. Remember, this postcard is a way to help you to process *your* own journey in a creative way. Your design could also really help others, too!



The Postcard **PROJECT**

GREENSHAW HIGH SCHOOL

Inspiration...



**BY AIR MAIL
PAR AVION**

STUCK FOR IDEAS? ASK YOURSELF:

Did you learn a new skill or take up a new hobby during lockdown?

Have you enjoyed spending more time with your family?

Did you miss your friends, or going to school each day?

Have you struggled to stay positive and productive during lockdown? Did you feel worried about the future?

What have you learnt about yourself during this time?

Have you spent more time outdoors in nature, walking or exercising?

How have you stayed connected to friends and family, as well as to your learning?

LOGISTICS

THE PROJECT WILL LAUNCH ON MONDAY 19TH OCTOBER!

YEAR 7 AND 8

Students in Year 7 and 8 will complete their postcard design during their art lessons. Their art teacher will provide the blank postcards, so year 7 and 8 tutors will not need to do anything other than promote the project in tutor time.

YEAR 9 - 13

Students in Year 9, 10, 11, 12 and 13 will be provided with a blank postcard by their tutor. A video will be provided to give a brief explanation about the project, with the tutor's support. Please encourage your tutees to participate and complete their artistic postcard designs. The more engagement we have the more successful the project will be! Students can put their completed postcards in the postbox available at their year group gate upon entry each morning.

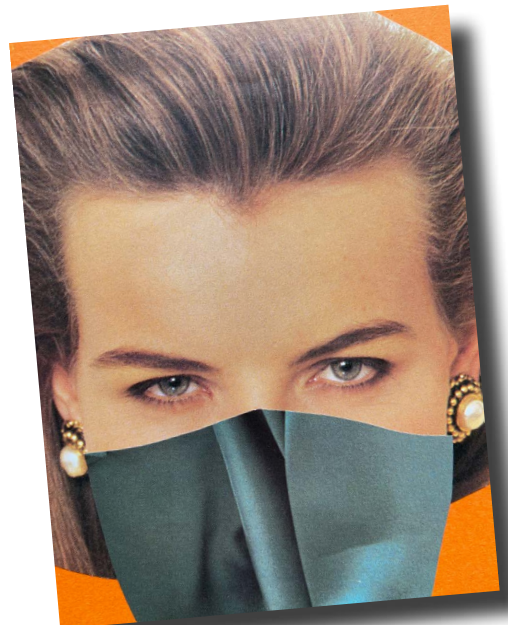
STAFF

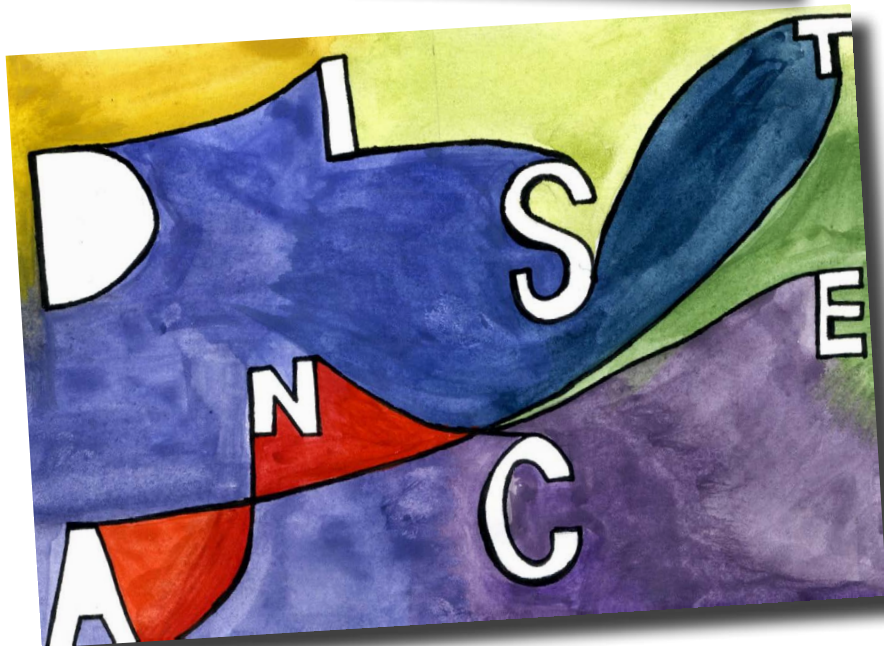
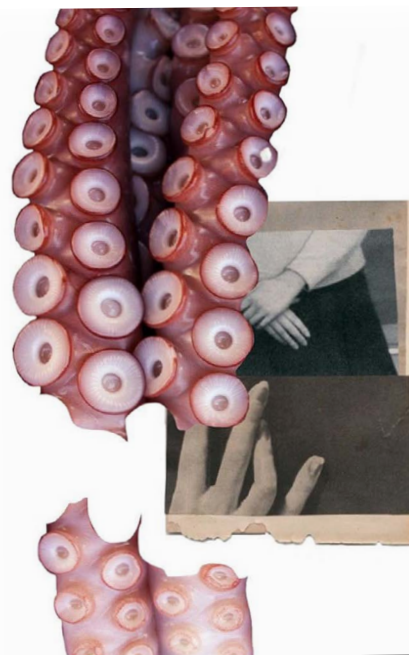
I would love for staff engagement to be really high, and to encourage pupils to do the same. Creativity can be a vital tool in helping us process experiences, so why not have your own little art therapy session during half term?

THE PROJECT WILL END ON FRIDAY 6TH NOVEMBER

Students and staff will have 3 weeks to complete their postcard (including October half term). In order to collect them safely, there will be a year group cardboard postbox on each year group gate, so students can post them safely without contact, where they can then be left to quarantine before I sort through them.

EXAMPLES





OUTCOME

Using the postcards, we will create a large scale mural using the school's logo. This brings together everyone's individual contributions, to create a community focused final outcome that everyone will walk past.



QUESTIONS?

FEEL FREE TO EMAIL ME: eshakespeare@greenshaw.co.uk

THANKS IN ADVANCE FOR YOUR SUPPORT!

“To practice any art,
no matter how well or
badly, is a way to make
your soul grow.
So do it.”

– Kurt Vonnegut